

Rentain Road, Chartham, Canterbury, Kent, CT4 7JJ

£1,300 PCM



Rentain Road

Chartham, Canterbury CT4 7JJ

Located in the beautiful and highly popular village of Chartham is this two-bedroom end of terrace house with lovely views over the Chartham valley. At the front of the property is a communal garden which is well maintained. You enter the central hallway which leads to a generous sized living room, kitchen diner with fully fitted white gloss units and access to the private, self-contained rear garden which is an amazing space for outdoor living and entertaining. Move upstairs and you will discover a bright, modern bathroom with a shower over bath in white gloss and chrome and two double bedrooms. The property has laminated flooring throughout and would make a great family home. The area has ample parking all available without the need for any parking permits.



Property available from July 2026
Rent £1,300 PCM
Deposit is £1,500 (equal to 5 weeks rent) to be secured with the TDS
Council tax band: B
Unfurnished
Please refer to the fee's tab on our website (www.sallyhatcher.co.uk) for all information on fee's and deposit options

Entrance / Hallway

Living Room

11'6" x 11'10" (3.521 x 3.612)

Kitchen / Diner

9'1" x 17'11" (2.794 x 5.466)

First Floor / Stairs

Bathroom



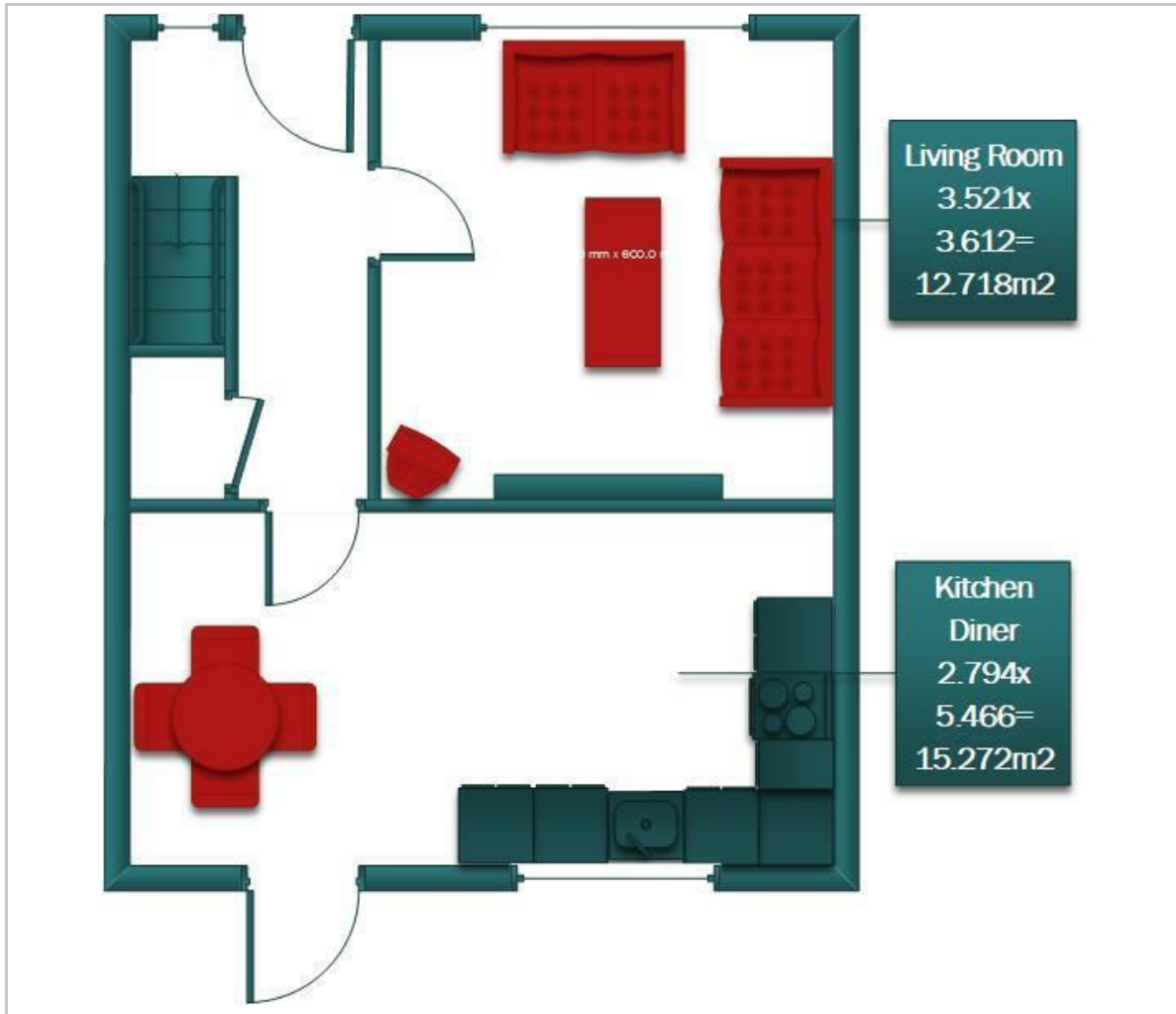


Bedroom 1

Bedroom 2



Floor Plan



Viewing

Please contact us on 01227 733888 if you wish to arrange a viewing appointment for this property or require further information.

These particulars, whilst believed to be accurate are set out as a general outline only for guidance and do not constitute any part of an offer or contract. Intending purchasers should not rely on them as statements of representation of fact, but must satisfy themselves by inspection or otherwise as to their accuracy. No person in this firm's employment has the authority to make or give any representation or warranty in respect of the property.

Area Map



Energy Efficiency Graph

